



Longitudinal Enrollment Report

October 2021

Table of Contents

Preliminary Fall 2021 Enrollment	3
Historical Fall Enrollment	4
Fall and Spring Enrollment	5
Enrollment by First-Time and Degree-Seeking Status	6
Enrollment by Full-Time and Part-Time Status	7
Enrollment by Credit Hour Load	8
Enrollment by Residence	9
Enrollment by Age	10
Enrollment by Online and Face-to-Face	11
Enrollment by Concurrent and Dual - Fall	12
Concurrent and Dual Enrollment Breakdown - Annual	13
Service Area High School Graduates - Projected	14
Service Area High School Graduates - by High School	15
Enrollment at Cody Center	16
Wyoming Community College Enrollment - Fall	17
Fall-to-Fall Retention Rate	18
Fall-to-Spring Retention Rate	19
Graduation Rate	20

Preliminary Fall 2021 Enrollment*

Headcount	1415
FTE	1143

Enrollment Status	Headcount	% of Total
Full-Time	646	46%
Part-Time	769	54%
<i>Total</i>	<i>1415</i>	<i>100%</i>

First-Time and Degree-Seeking Status	Headcount	% of Total
First-Time Degree-Seeking	274	19%
All Other Degree-Seeking	616	44%
Non-Degree-Seeking	525	37%
<i>Total</i>	<i>1415</i>	<i>100%</i>

Residency	Headcount	% of Total
Wyoming Service Area	1012	72%
Wyoming Out-of-Service Area	121	9%
WUE State	212	15%
Other Out-of-State	70	5%
<i>Total</i>	<i>1415</i>	<i>100%</i>

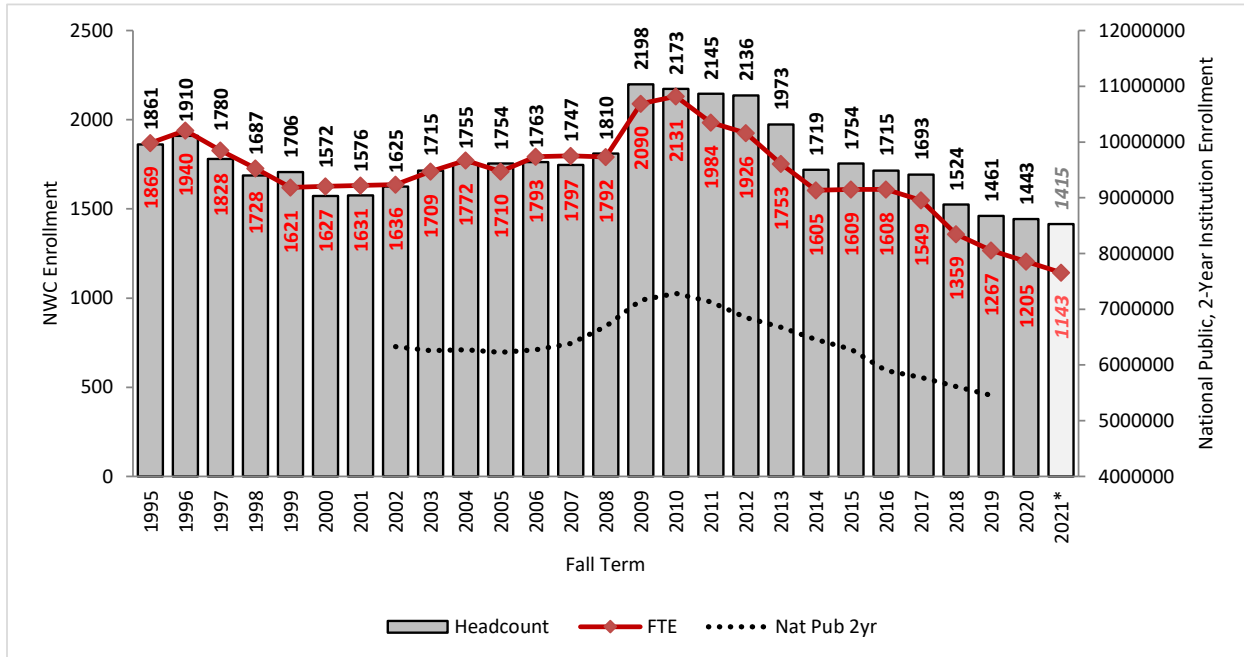
Age	Headcount	% of Total
<18	408	29%
18-21	569	40%
22-29	204	14%
>=30	234	17%
<i>Total</i>	<i>1415</i>	<i>100%</i>

Concurrent/Dual Enrolled	Headcount	% of Total
Concurrent/Dual	388	27%
Non-Concurrent/Dual	1027	73%
<i>Total</i>	<i>1415</i>	<i>100%</i>

Program Areas with 10 Highest Numbers of Majors	Majors
Health Sciences (Non-Nursing)	201
General Studies	125
Agriculture	79
Nursing	77
Education	66
Business	65
Biology (incl. Natural Resource Bio, Pre-Professional Sciences)	51
Psychology	37
Criminal Justice	37
Welding	31

**Fall 2021 enrollment is preliminary, as of 9/21/2021.
Official fall enrollment will be available in February 2022.*

Historical Fall Enrollment



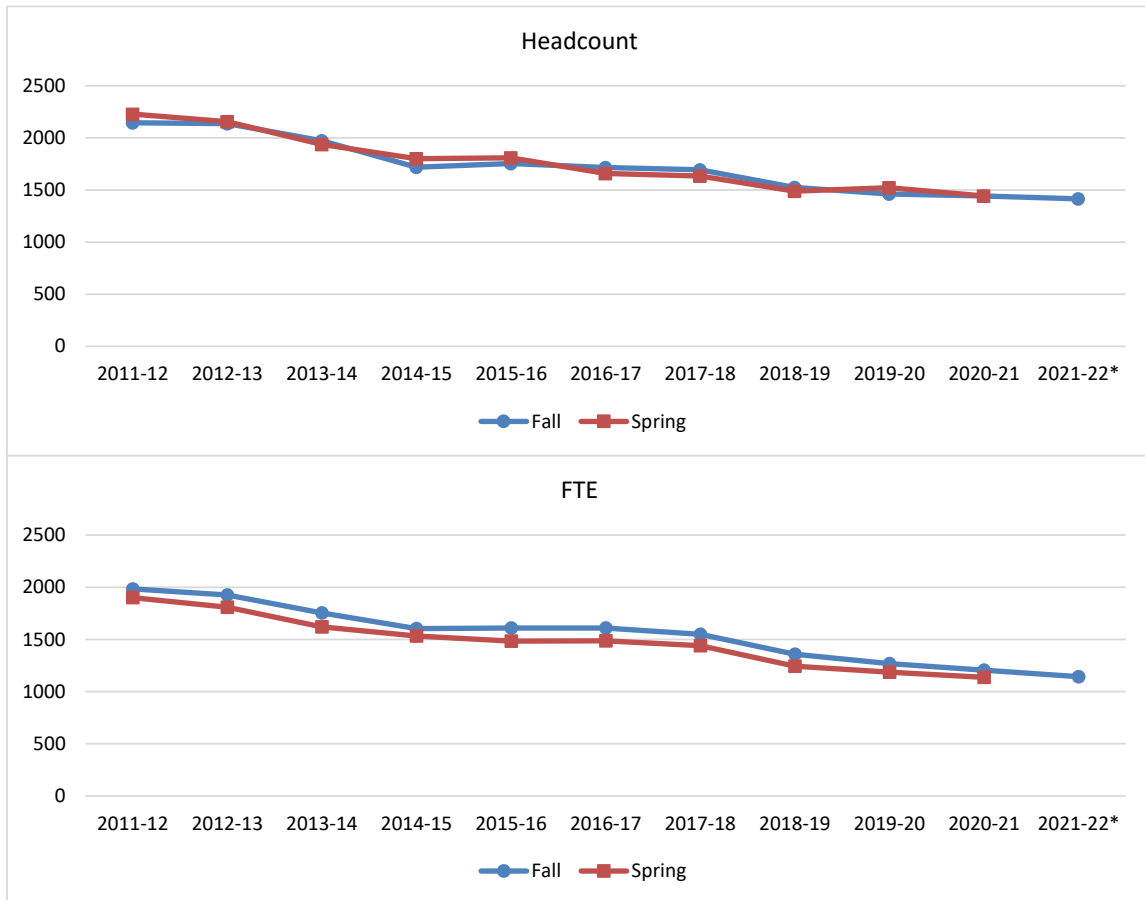
*2021 enrollment is preliminary, as of 9/21/2021, and will increase before the end of term.
Enrollment for all previous terms is final.

Definition: **Headcount** is the unduplicated number of students who were enrolled (a student is counted once, no matter how many credits the student is taking).
Full-time equivalent (FTE) enrollment is the number of credits in which all students are enrolled divided by 12 (the number that represents a full-time load for one term).

Summary: Prior to NWC's enrollment peak in Fall 2009 and Fall 2010, FTE followed the unduplicated headcount closely. Since then, FTE has been notably lower than the headcount. This is due to the increasing percentage of students taking part-time loads, in particular high school concurrent and dual students.

Enrollment numbers reported by the National Center for Education Statistics (U.S. Department of Education) show that enrollment for all public, two-year institutions follows a similar path to NWC's. (Only Fall 2002 through Fall 2019 is available at this point nationally.) Reasons public, 2-year institutions have experienced decreasing enrollment in the past decade could include students choosing options after high school other than college, rising graduation rates (therefore, students are spending less time in college), low unemployment rates compared to the recession years, and the recent coronavirus pandemic.

Fall and Spring Enrollment



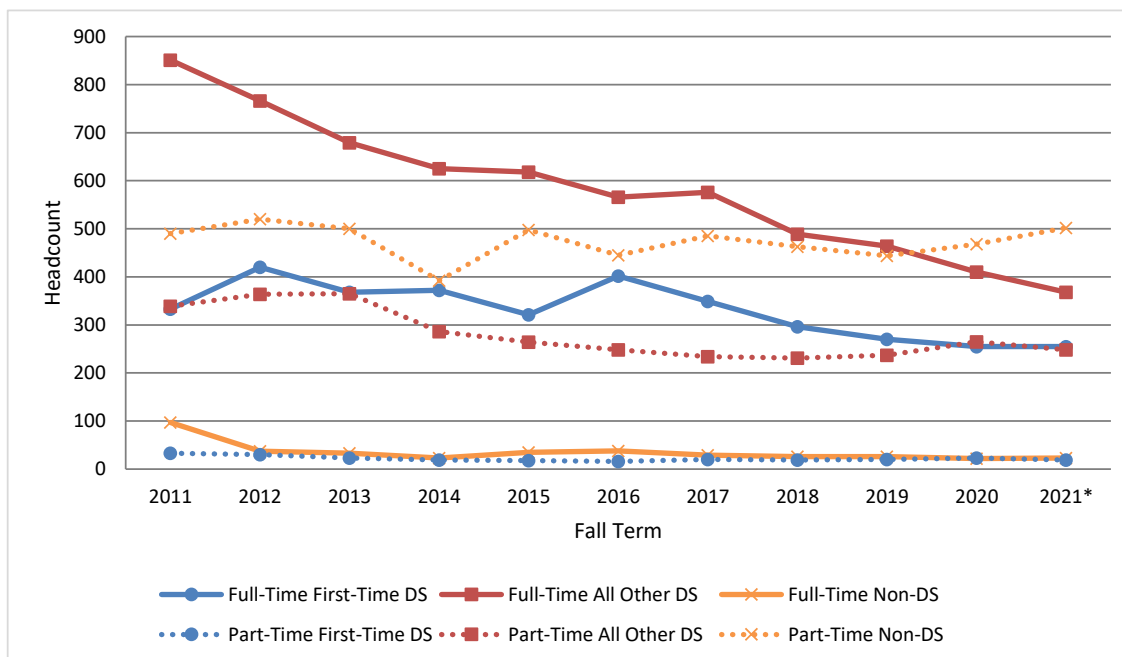
*2021 enrollment is preliminary, as of 9/21/2021.

Summary: Over the past decade, headcount has been fairly close from the fall to the spring of an academic year.

Full-time equivalent (FTE) has consistently been lower in the spring than the fall. On average, spring FTE has been 6% lower than the fall.

Therefore, though a similar number of students enroll in both terms of an academic year, students tend to take fewer credits in the spring than in the fall.

Enrollment by First-Time and Degree-Seeking Status



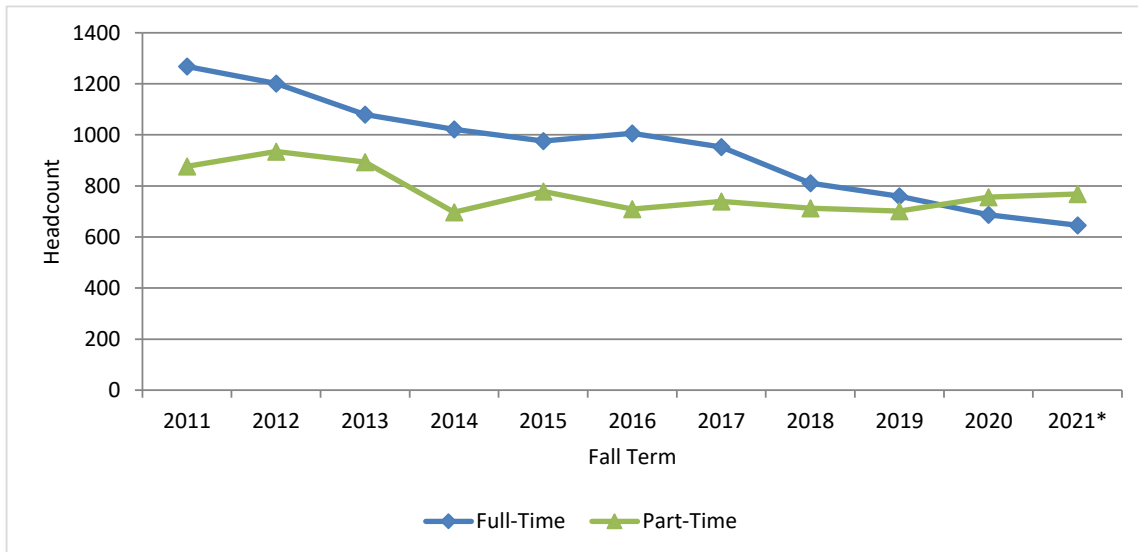
*2021 enrollment is preliminary, as of 9/21/2021.

Definition: **Degree-seeking (DS) students** are those majoring in either a degree and/or a certificate program. **First-time students** are students who have not enrolled in college since graduating from high school (they may have taken concurrent/dual courses in high school). **All other degree-seeking students** include returning and transfer students. **Non-degree-seeking students** are not pursuing a degree or certificate (includes concurrent/dual enrolled high school students).

Summary: Historically, due to its size, full-time "all other degree-seeking students" has most impacted the overall enrollment trend. Fall 2020 marked the first year where part-time enrollment was larger than full-time enrollment. In Fall 2021, the largest group is **part-time non-degree-seeking students** (primarily concurrent and dual students), making up 35% of total population, followed by full-time "all other degree-seeking students" (returning and transfer students), making up 26% of total population. Full-time, first-time degree-seeking students account for 18% of total enrollment.

Full-Time	Percent of Total Enrollment - Fall 2021
First-Time Degree-Seeking	18%
All Other Degree-Seeking	26%
Non-Degree-Seeking	2%
Part-Time	Percent of Total Enrollment - Fall 2021
First-Time Degree-Seeking	1%
All Other Degree-Seeking	18%
Non-Degree-Seeking	35%

Enrollment by Full-Time and Part-Time Status



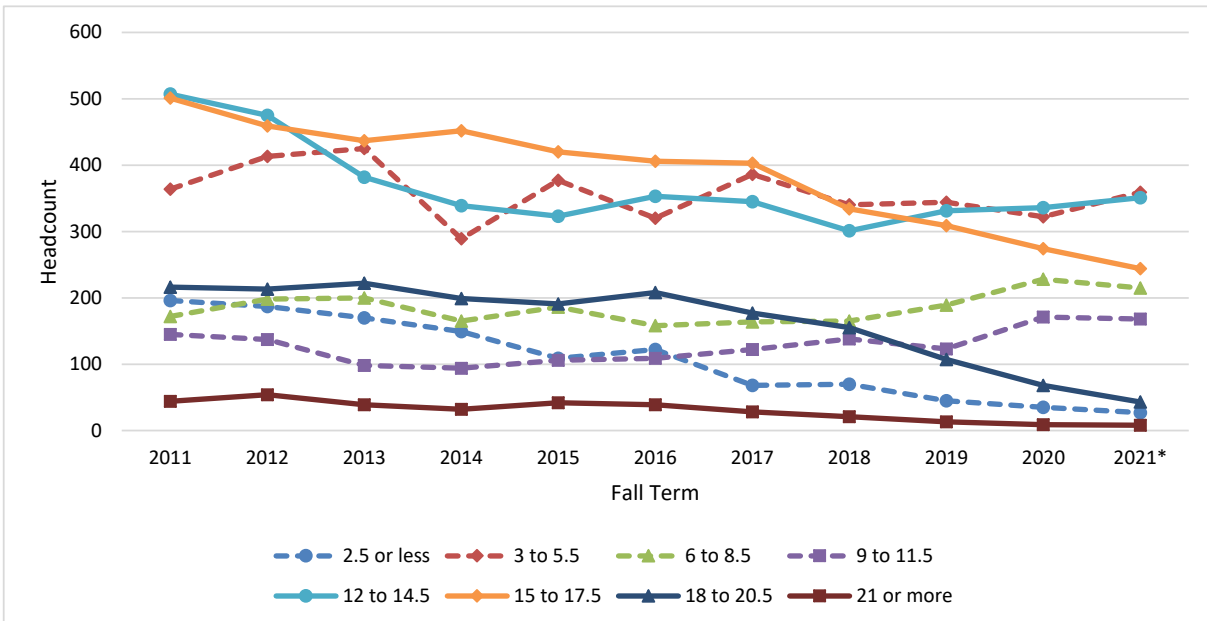
**2021 enrollment is preliminary, as of 9/21/2021.*

Definition: A **full-time student** is enrolled in 12 credits or more during an enrollment term. A **part-time student** is enrolled in 0.5 to 11.5 credits. Both degree-seeking and non-degree-seeking students are included in this measure.

Summary: In Fall 2011, full-time students accounted for 59% of total headcount. Part-time students became the majority population starting in Fall 2020. In Fall 2021, full-time make up 46% of enrollment.

Students are enrolling in fewer credits than they did ten years ago. Some of the increase in part-time enrollment is due to an increase in concurrent and dual enrollment over this time.

Enrollment by Credit Hour Load



*2021 enrollment is preliminary, as of 9/21/2021.

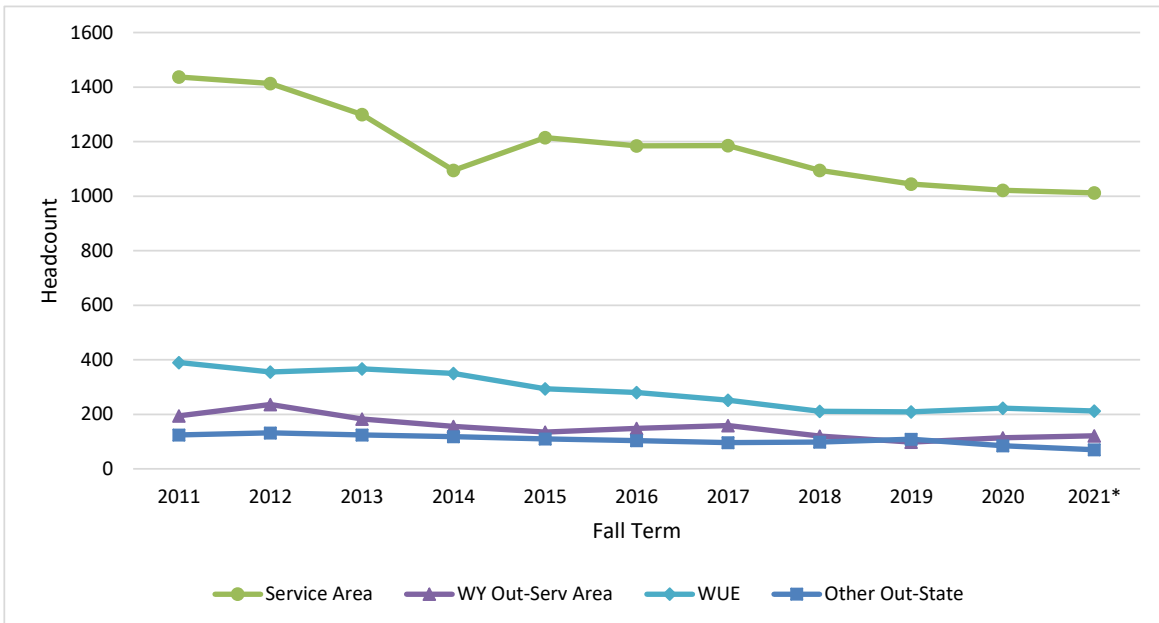
Definition: This measure shows how many students (unduplicated headcount) are enrolled in each **credit hour range**.

Full-time loads - solid lines on graph; part-time loads - dashed lines.

Summary: Over the past decade, the largest numbers of students enrolled in 3 to 5.5 credits, 12 to 14.5 credits, and 15 to 17.5 credits account for the largest groups.

In Fall 2019, Wyoming community colleges changed the tuition flat rate, which previously allowed students to pay the same tuition amount for any credit load between 12-20 credits. This flat spot is now for 15-20 credits. This change may have impacted the number of credits in which students enroll. The number of students enrolled in 15 or more credits has decreased over the past few years, whereas the number enrolled in 12 to 14.5 credits has increased.

Enrollment by Residence

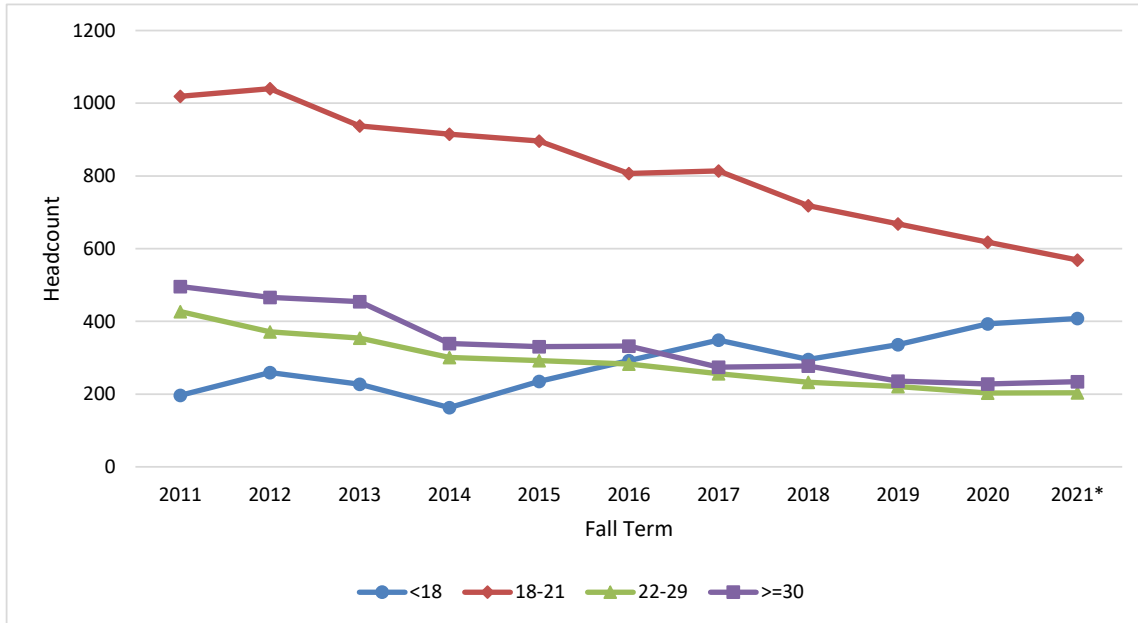


*2021 enrollment is preliminary, as of 9/21/2021.

Definition: Residence location is determined by a student's **residence county and state**. **Service area** consists of Park, Big Horn, and Washakie counties in Wyoming. **Western Undergraduate Exchange (WUE)** states consist of Alaska, Arizona, California, Colorado, Hawaii, Idaho, Montana, Nevada, New Mexico, North Dakota, Oregon, South Dakota, Utah, Washington, and the US Pacific Territories and Freely Associated States (Nebraska residents are also given the WUE rate at NWC). Students from other countries and US states outside Wyoming and WUE states are included in **Other Out-of-State**.

Summary: In Fall 2021, 72% of students came from NWC's service area, 15% came from WUE states, 9% came from Wyoming counties outside NWC's service area, and 5% came from out-of-state (non-WUE).

Enrollment by Age



*2021 enrollment is preliminary, as of 9/21/2021.

Definition: This measure shows unduplicated headcount enrollment by age.

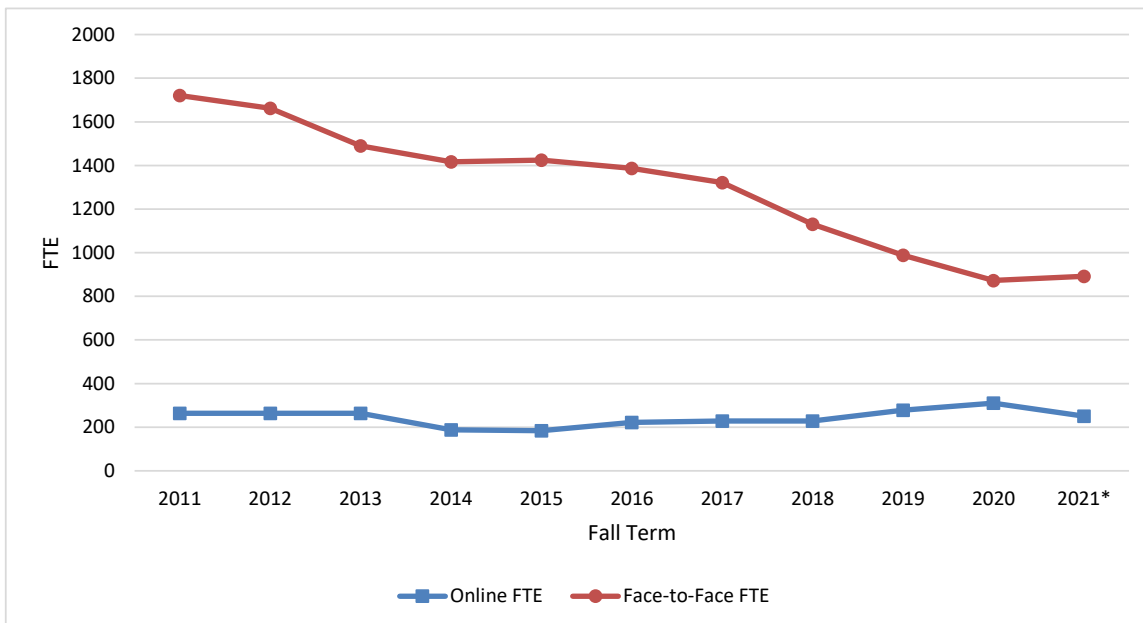
Summary: In Fall 2021, the median age is 19 years, and the average (mean) age is 23.

The number of students under 18 has increased since 2011, which corresponds to the increase of concurrent and dual enrollment.

Percent of total population:

- 18-21 years: 40%
- Less than 18 years: 29%
- Greater than or equal to 30 years: 17%
- 22-29 years: 14%

Enrollment by Online and Face-to-Face



*2021 enrollment is preliminary, as of 9/21/2021.

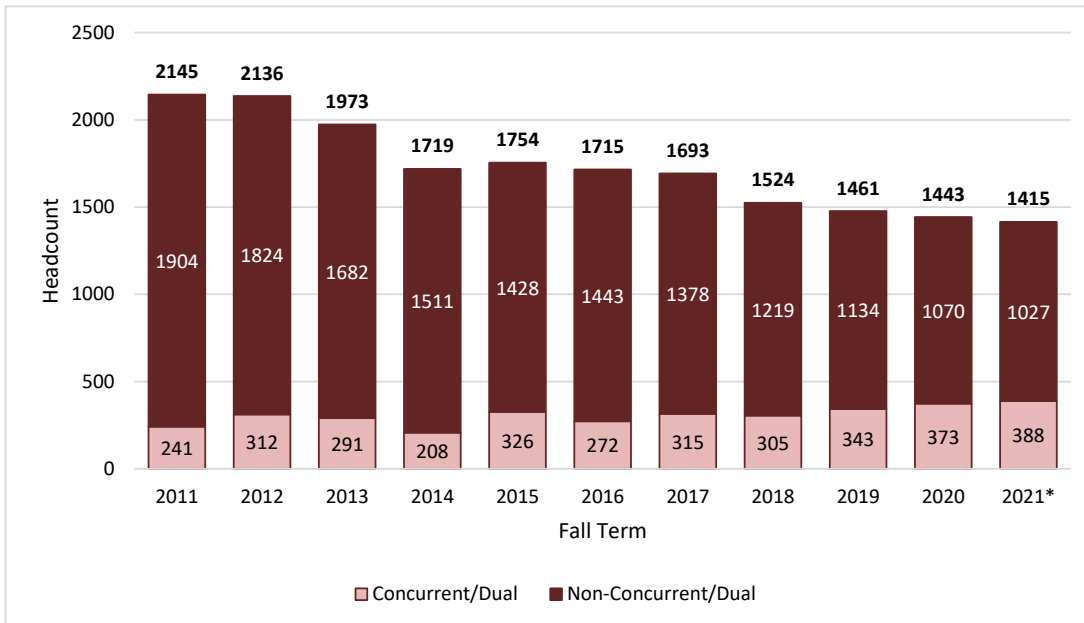
Definition: **Online** courses are taken completely through distance methods. **Face-to-face** courses are partially or fully taught in person.

Summary: *Disclaimer: Due to the coronavirus pandemic, some Fall 2020 classes originally scheduled to be face-to-face have had to use alternative delivery methods to accommodate social distancing. They are still considered to be face-to-face for this chart. This chart represents enrollment by how classes were originally scheduled.*

Enrollment in courses scheduled to be delivered online has remained fairly steady since Fall 2011, with small increases. Online enrollment has not seen the declines that face-to-face enrollment has seen.

In Fall 2021, FTE (credits/12) for online courses made up 22% of total FTE, compared to 13% in Fall 2011.

Enrollment by Concurrent and Dual - Fall



*2021 enrollment is preliminary, as of 9/21/2021.

Definition: **Concurrent** students are enrolled in credit courses taught in high schools by college-approved high school teachers. **Dual** students are enrolled in credit courses taught by NWC faculty.

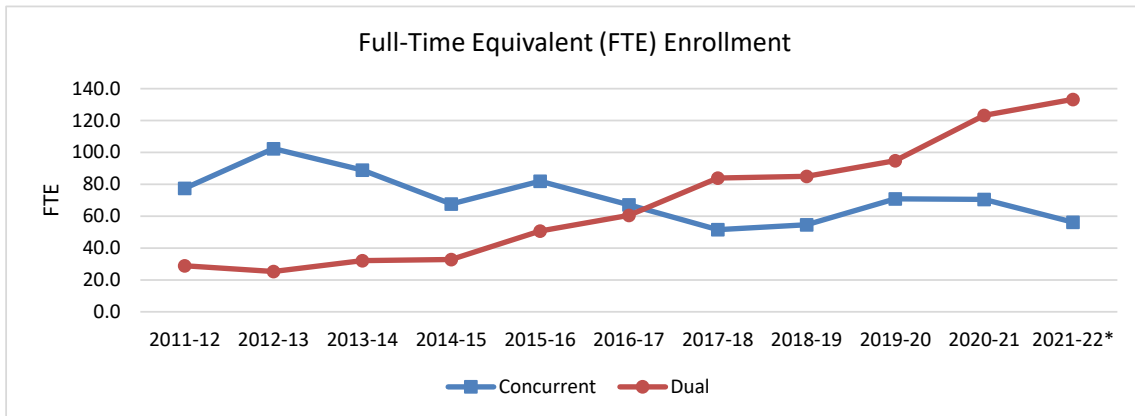
Summary: Concurrent enrollment began with a pilot program in Spring 2009 and was fully implemented at all Big Horn Basin (BHB) high schools in Fall 2009. Dual enrollment has been available prior to 2009.

All service area high schools except Ten Sleep and alternative schools participate in concurrent enrollment; all high schools participate in dual enrollment. Homeschooled students began participating in dual and concurrent enrollment in 2014-15.

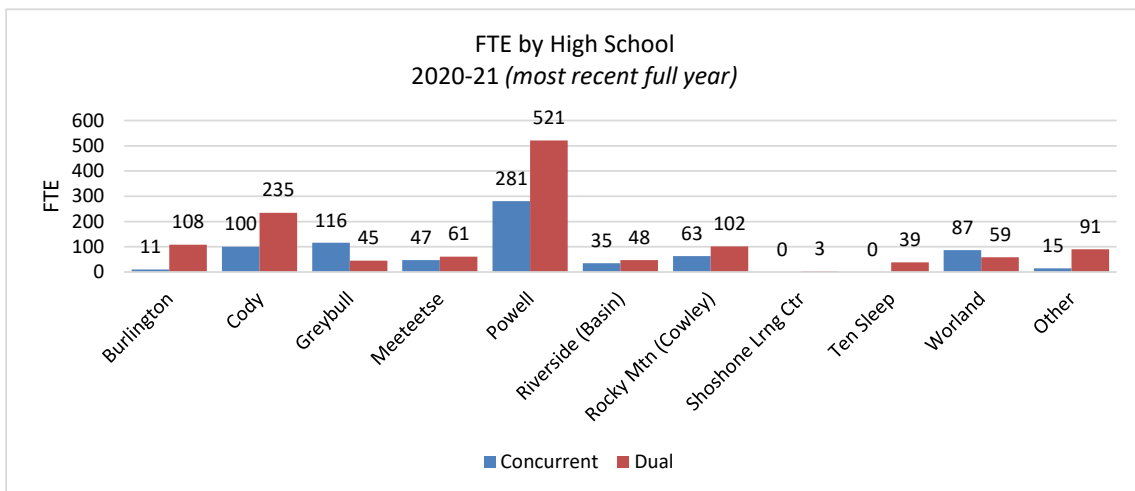
In Fall 2021, concurrent and dual enrollment headcount makes up 27% of total headcount, compared to 11% in Fall 2011.

Concurrent and dual credits make up 16% of Fall 2021 credits, compared to 4% in Fall 2011.

Concurrent and Dual Enrollment Breakdown - Annual



*2021-22 concurrent FTE is preliminary and only represents Fall 2021.



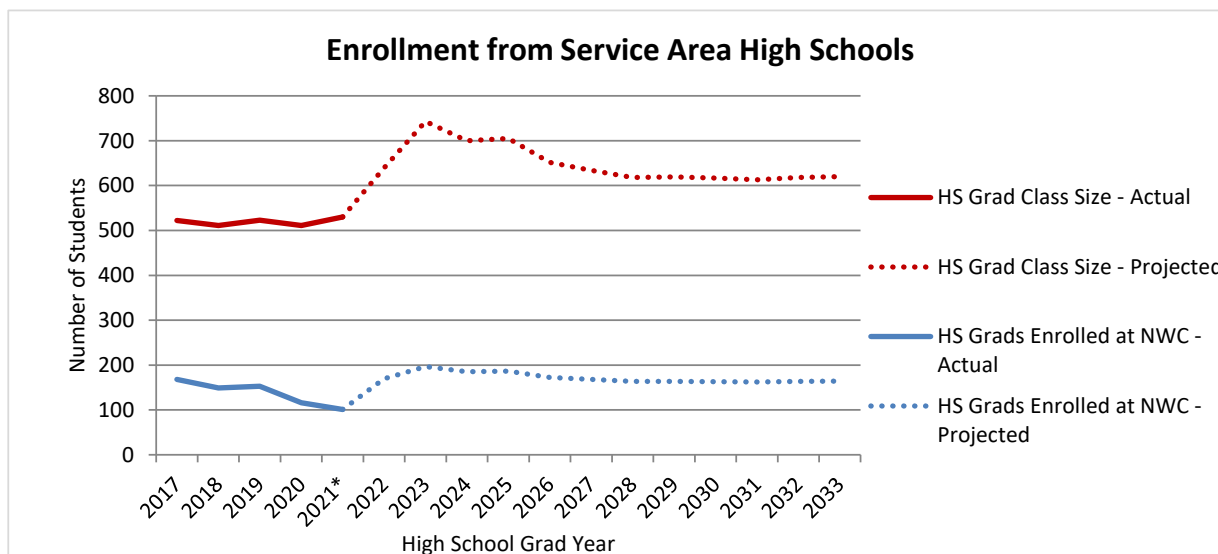
Definition: **Concurrent** students are enrolled in credit courses taught in high schools by college-approved high school teachers. **Dual** students are enrolled in credit courses taught by NWC faculty. **Annual full-time equivalent (FTE)** is the sum of enrolled credits divided by 24.

Summary: Dual enrollment FTE has more than quadrupled since 2011-12.

Concurrent enrollment began with a pilot program in Spring 2009 and was fully implemented at all Big Horn Basin (BHB) high schools in Fall 2009. Concurrent enrollment declined for a few years, primarily due to changes in high school faculty, though the previous two completed years saw increases in concurrent enrollment.

Preliminary 2021-22 concurrent enrollment only includes Fall 2021 and is expected to increase when the completed year is reported since spring concurrent enrollment is typically larger than fall's.

Service Area High School Graduates - Projected



*2021 enrollment is preliminary since the 2021-22 academic year is still in progress.

Past 5-Year Ave (% of HS Grads Enrolled at NWC): 26%

Definition: This measure shows actual and projected numbers of:
 - **service area high school graduating class sizes**
 - **students from the high schools who attended (or are projected to attend) NWC** within a year following high school graduation.

Actual graduating class sizes were obtained from final high school transcripts. Projected class sizes are from the Wyoming Department of Education's current reported class sizes. The projected number of graduates who will enroll at NWC was calculated by taking the average enrollment yield over the past five years and multiplying by the projected class sizes.

Service area high schools are the public high schools within Park, Big Horn, and Washakie counties, including Shoshone Learning Center (Powell) and Heart Mountain Academy (Cody).

Summary: Over the past five years, 26% of service area high school graduates have enrolled at NWC within a year of graduation. Assuming this enrollment yield will continue, NWC may see an increase in enrollment from service area high schools through 2025 and then a drop-off through 2033. This corresponds with the projected nationwide decline of high school graduates, sometimes referred to as the "enrollment cliff".

This year, service area schools have fairly large classes in the 9th through 11th grades (graduating classes of 2023 through 2025), with smaller classes in the younger grades.

Service Area High School Graduates - By High School

Percent of High School Graduates Enrolled at NWC

School	2017	2018	2019	2020	2021*	5-Yr Ave
Burlington	35%	32%	35%	10%	21%	28%
Cody	28%	33%	34%	25%	12%	27%
Greybull	31%	17%	15%	24%	19%	21%
Heart Mountain Academy	<i>began collecting in 2021</i>				11%	11%
Lovell	40%	39%	28%	31%	23%	32%
Meeteetse	8%	0%	13%	0%	0%	4%
Powell	59%	44%	46%	36%	32%	42%
Riverside (Basin)	20%	29%	16%	17%	16%	19%
Rocky Mtn (Cowley)	37%	26%	43%	20%	23%	30%
Shoshone Learning Center	18%	56%	46%	0%	8%	24%
Ten Sleep	0%	0%	0%	0%	0%	0%
Worland	16%	6%	10%	9%	11%	11%
Average	32%	29%	29%	23%	19%	26%

*2021 information is preliminary since the 2021-22 academic year is still in progress.

Blue - percent of graduates enrolled at NWC was **HIGHER** than service area average for year.

Orange - percent of graduates enrolled at NWC was **LOWER** than service area average for year.

High School Graduating Class Sizes

School	2017	2018	2019	2020	2021
Burlington	17	19	17	10	19
Cody	132	136	122	126	109
Greybull	48	42	47	34	27
Heart Mountain Academy	<i>began collecting in 2021</i>				19
Lovell	42	51	47	32	52
Meeteetse	13	8	8	9	8
Powell	104	107	114	128	137
Riverside (Basin)	20	21	19	24	19
Rocky Mtn (Cowley)	27	31	30	30	30
Shoshone Learning Center	11	9	13	13	13
Ten Sleep	12	9	10	7	6
Worland	96	78	96	98	91
Average	522	511	523	511	530

Source: NWC Admissions Office (High School Transcripts)

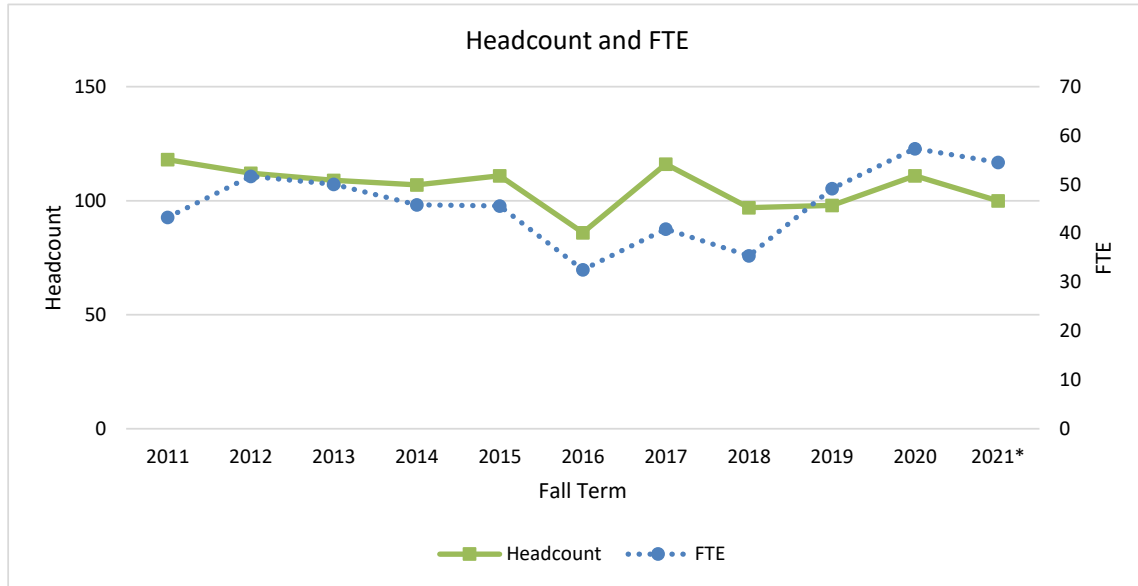
Definition: This measure shows the percentage of **high school graduates who enrolled at NWC** in the academic year following high school graduation. Service area includes Big Horn, Park, and Washakie counties.

Summary: Over the past five years, 26% of service area high school graduates have enrolled at NWC within a year of graduation.

- **Highest:** Powell (42% of grads), Lovell (32%), Rocky Mountain (30%)

- **Lowest:** Worland (11%), Meeteetse (4%), Ten Sleep (0%)

Enrollment at Cody Center



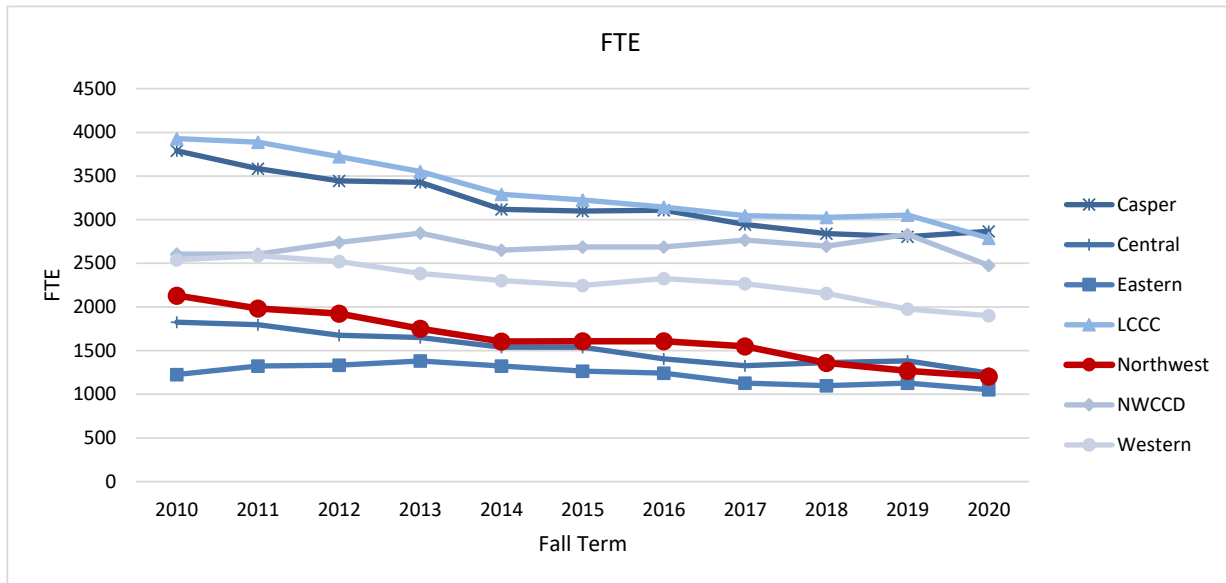
**2021 enrollment is preliminary, as of 9/26/2021.*

Definition: This measure counts headcount and FTE for **students enrolled in credit classes at the Cody Center**. Concurrent enrollment (taken by high school students in the high schools) and non-credit enrollment are not included.

Summary: FTE at the Cody Center has increased in recent years, with a small decrease in the past year, due to increased program offerings in Cody. NWC has been developing non-credit programs in Cody and transitioning them to credit programs, particularly in allied health areas.

Cody Center FTE has increased by a greater percentage than headcount since Fall 2018, indicating students are taking larger credit loads, due to their participation in academic programs based out of the Cody Center.

Wyoming Community College FTE Enrollment - Fall



Fall 2021 statewide results not available until February 2022.

Source: Wyoming Community College Commission Enrollment Reports

Definition: This measure shows a comparison of **fall student full-time equivalent (FTE)** enrollment for NWC and the other six Wyoming community colleges.

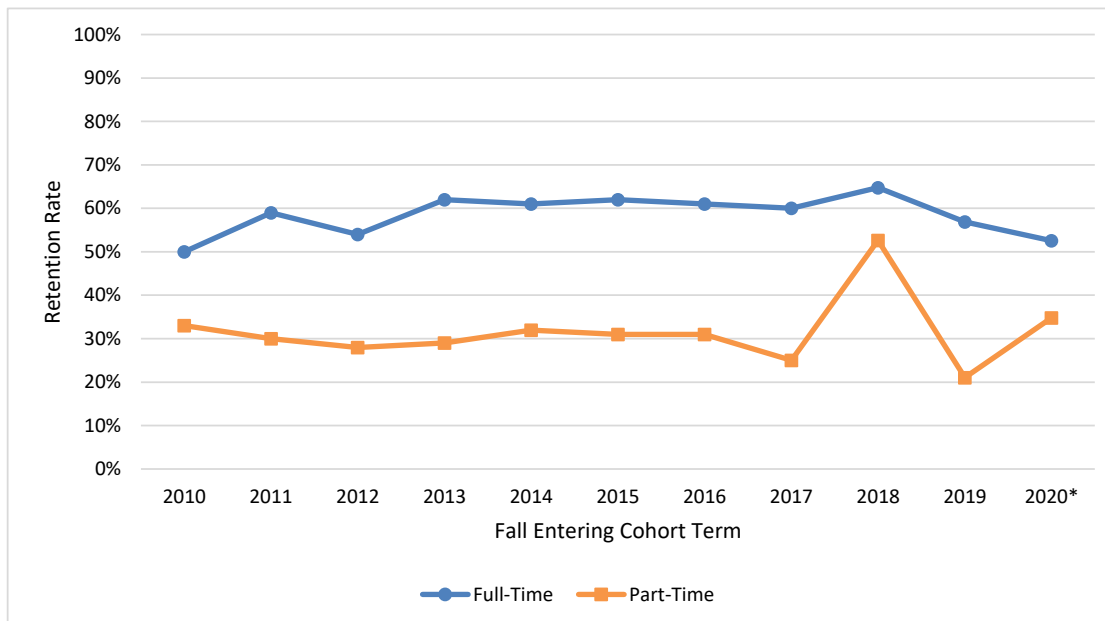
Summary: In Fall 2019, NWC's FTE accounted for 9% of statewide FTE and NWC's headcount accounted for 7% of statewide headcount.

Though NWC's enrollment is among the lowest in Wyoming, students tend to take larger credit loads at NWC than at the other colleges, which boosts NWC's FTE. NWC has historically been the only Wyoming college with a majority full-time enrollment. (Fall 2020 marks the first year when NWC full-time and part-time enrollment are predicted to be approximately equal).

**Note percent changes are based on Fall 2020 as most recent official enrollment. Fall 2021 results are not available until February 2022.*

<u>Headcount</u>	<u>NWC</u>	<u>All Colleges</u>	<u>FTE</u>	<u>NWC</u>	<u>All Colleges</u>
1-year	-1%	-7%	1-year	-5%	-6%
5-year	-18%	-13%	5-year	-25%	-14%
10-year	-34%	-23%	10-year	-43%	-25%

Fall-to-Fall Retention Rate



**Fall 2020 retention rate is preliminary, as of 9/25/2021.*

Source: WCCC Performance Indicators Report (2016 forward); IPEDS Fall Enrollment Survey (2015 and prior); similar methods used for both.

Definition: **Fall-to-fall retention rate** is the percentage of students who enrolled in college for the first time in one fall term (cohort fall) and either are still enrolled in or completed their program of study by the following fall term at NWC. This measure is only calculated for **first-time, degree-seeking students**.

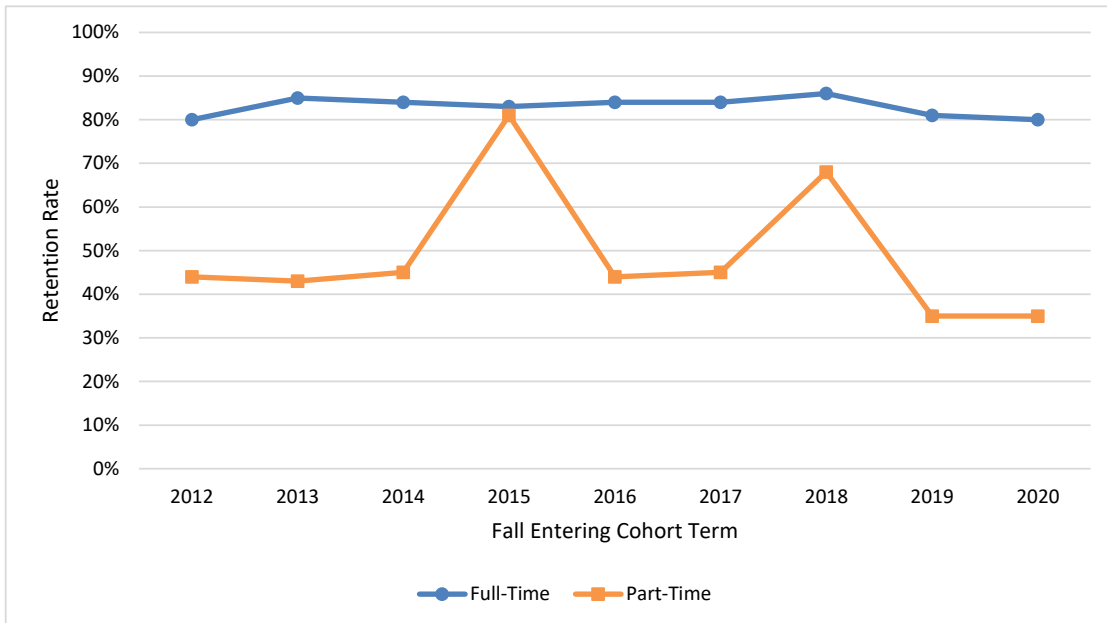
Summary: Preliminary results show that 53% of the 255 full-time, first-time, degree-seeking students in Fall 2020 returned to NWC or graduated by Fall 2021. This is a dip from NWC's previous few years' retention rates and may be due to effects from the coronavirus pandemic. Statewide and national Fall 2020 retention rates are not yet available for comparison.

NWC is commonly ranked as the highest or among the highest for full-time retention rate among the Wyoming colleges. NWC's retention rate has been comparable to national rates, which have ranged from 58-63% during the past decade.

NWC's preliminary part-time retention rate for the Fall 2019 cohort is 35%. The part-time, first-time, degree-seeking cohort is small, most recently 23 students, so the difference of a few students makes a large change in the retention rate. Part-time retention rates tend to be lower than full-time nationwide.

During the past decade, NWC has implemented or expanded multiple efforts to increase retention and graduation of students.

Fall-to-Spring Retention Rate

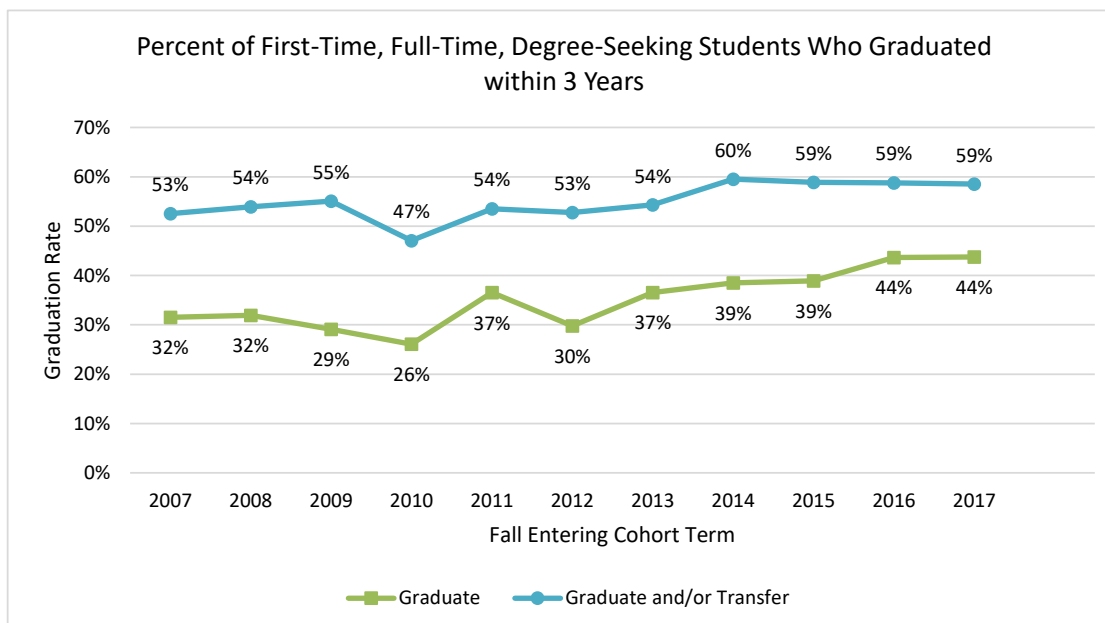


Definition: **Fall-to-spring retention rate** is the percentage of students who enrolled in college for the first time in one fall term (cohort fall) and either are still enrolled in or completed their program of study by the following spring term at NWC. This measure is only calculated for **first-time, degree-seeking students**.

Summary: Of Fall 2020 full-time, first-time, degree-seeking students, 80% returned in Spring 2021. The full-time fall-to-spring retention rate has been in the low to mid-80% range since NWC has been tracking it.

Part-time fall-to-spring retention has typically been in the mid-40% range, with two outlying spikes and a decrease to 35% for the past two years. The part-time, first-time, degree-seeking cohort is small, most recently 23 students, so the difference of a few students makes a large change in the retention rate.

Graduation Rates



Source: IPEDS Graduation Rates Survey

Definition: **Graduation rate** (a.k.a. "**completion rate**") is the percentage of **first-time, full-time, degree-seeking students** who enter in one fall term (cohort fall) and graduate in a degree or certificate program within 150% of normal time to completion (3 years for an associate degree).

Summary: NWC's graduation rate has climbed over the past decade, reaching the highest on record several times, most recently with the past two years' rates of 44%.

During these years, NWC incorporated robust retention and completion initiatives, such as 15-to-Finish, first-year seminars, the Advising Center, the HERO grant, identification of and connections with at-risk students, co-requisite math and English courses, and Help Alerts.

NWC's graduation rates are typically higher than or equal to the state average.

National graduation rates for the most recent ten years at public, two-year institutions ranged from 21% to 30%, with the rate seeing a rise over this time due to national completion initiatives. NWC has been well above the national average every year.

Some students' primary goal is to transfer from NWC rather than complete a degree, so by combining the completion and transfer rates, we see that 59% of Fall 2017 entering students either completed their program of study or transferred to another institution by the end of Summer 2020.